

4

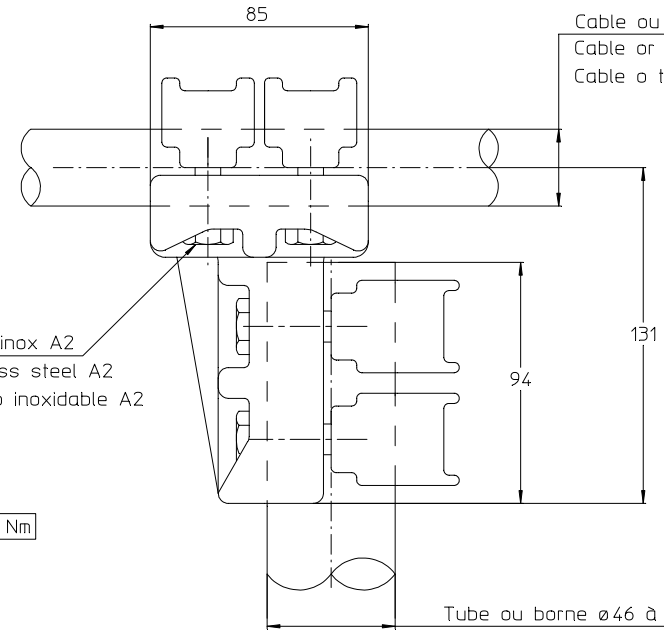
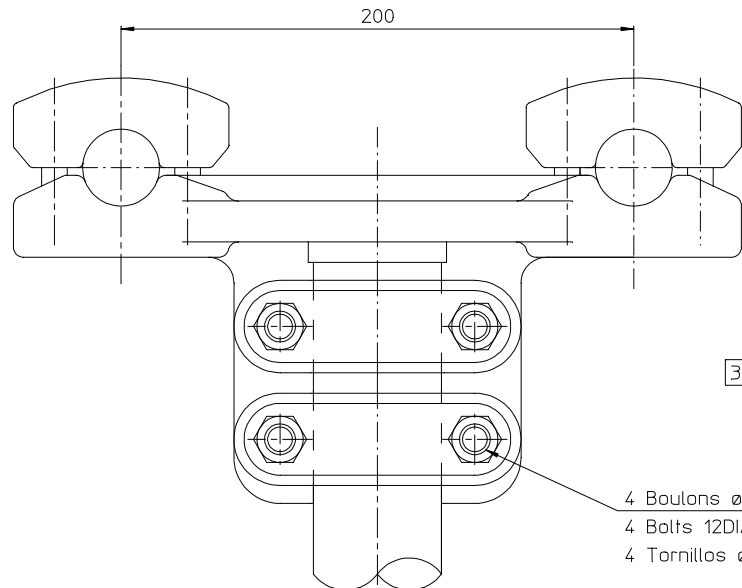
3

2

1

© COPYRIGHT 2007 BY TYCO ELECTRONICS CORPORATION ALL RIGHTS RESERVED. TOUS DROITS RESERVES

LOC		DIST		REVISIONS			
P	LTR REV	DESCRIPTION MODIFICATIONS		DATE	DWN DESS	APVD APPR	
	C	EQ00-0200-08		28-Apr-08	EN	LR	



Cable ou tube $\varnothing 26$ a 30.99
 Cable or tube 26DIA to 30.99
 Cable o tubo $\varnothing 26$ a 30.99

37 Nm { 8 Boulons $\varnothing 10$ acier inox A2
 8 Bolts 10DIA stainless steel A2
 8 Tornillos $\varnothing 10$ acero inoxidable A2

60 Nm { 4 Boulons $\varnothing 12$ acier inox A2
 4 Bolts 12DIA stainless steel A2
 4 Tornillos $\varnothing 12$ acero inoxidable A2

Tube ou borne $\varnothing 46$ à 50.99
 Tube or terminal 46Dia to 50.99
 Tubo o borna $\varnothing 46$ a 50.99

<small>THIS DRAWING IS CONTROLLED BY TYCO ELECTRONICS CORPORATION. IT IS SUBJECT TO THE REVISIONS AND THE ENGINEERING ORGANIZATION OF TYCO ELECTRONICS. SIMEL SHOULD BE CONTACTED FOR THE LATEST REVISION. CE PLAN EST UN DOCUMENT CONTRÔLÉ PAR TYCO ELECTRONICS CORPORATION. IL EST SUSCEPTIBLE D'ÊTRE REVISÉ. POUR OBTENIR LA DERNIÈRE RÉVISION, CONTACTER LES SERVICES TECHNIQUES DE TYCO ELECTRONICS SIMEL SAS - 21220 GÉVELY CHAMBEREN FRANCE.</small>		DWN /DESSINE NIVONIS 28-Apr-08				
DIMENSIONS: mm 		CHK /VERIFIE GODARD 28-Apr-08 APVD /APPROUVE ROYER PRODUCT SPEC SPEC. PRODUIT 02BFC0031 APPLICATION SPEC SPEC. APPLICATION -	NAME TITRE T 82 F 30 E200 50		RESTRICTED TO RESERVE A -	
MATERIAL MATIERE -		FINISH FINITION -	APPROX. WEIGHT MASSE, APPROX. 3.45 KG	SIZE FORMAT A3	CAGE CODE 00779	DRAWING NO NO PLAN ©-713164
CUSTOMER DWG / PLAN CLIENT			UNQUEMENT FOUR REFERENCE	SCALE ECHELLE 1/2	SHEET FEUILLE 1 OF 1	REV C

ITEM: